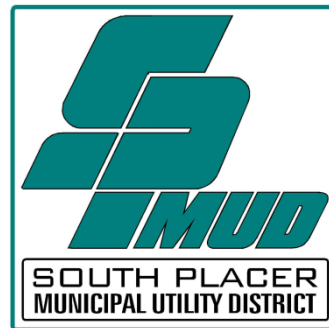


Foothill Trunk Replacement

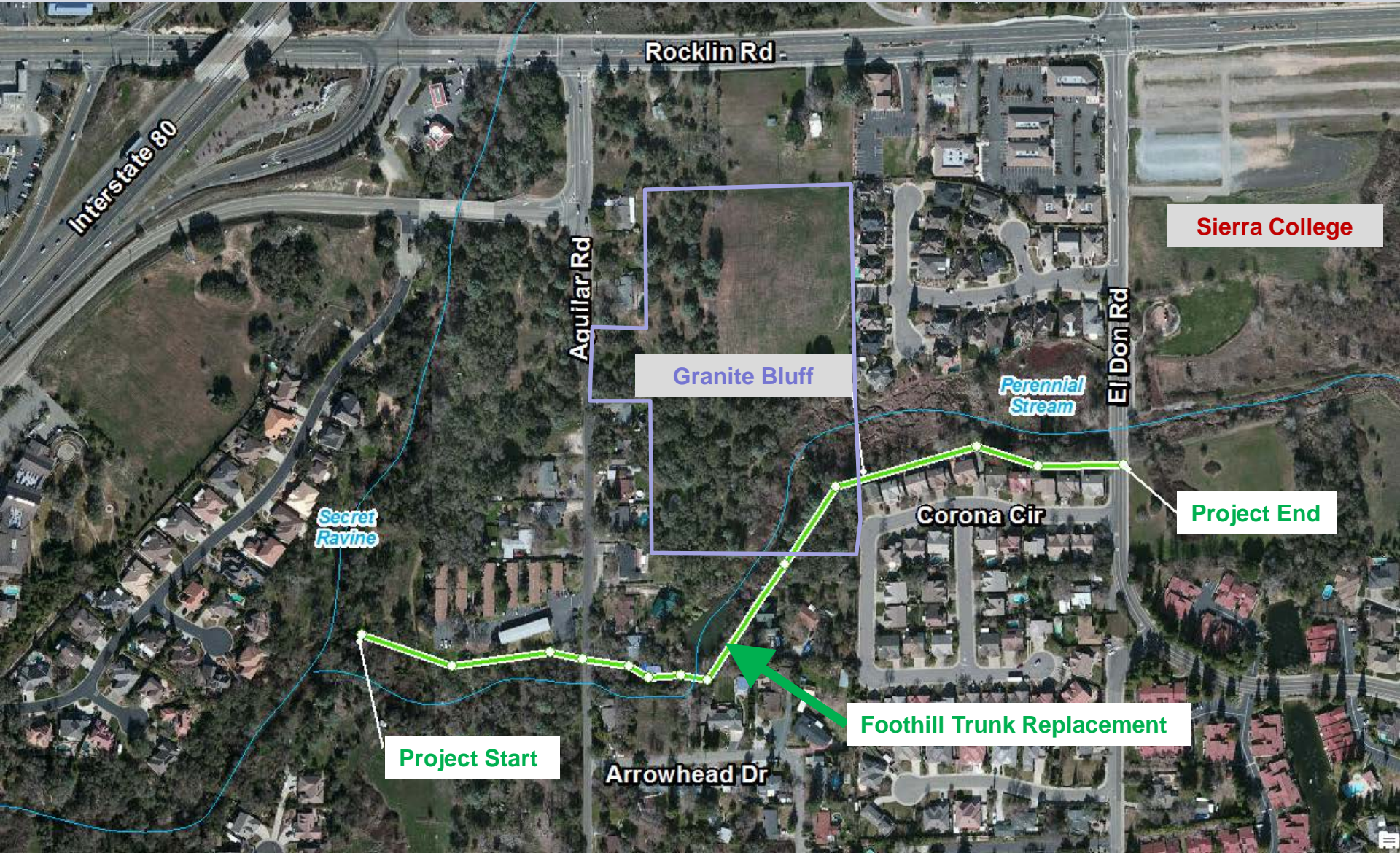
Construction Schedule Update



Eric Nielsen, P.E.

February 7, 2019

Foothill Trunk Replacement



Interstate 80

Rocklin Rd

Aquilar Rd

El Don Rd

Sierra College

Granite Bluff

Perennial Stream

Secret Ravine

Corona Cir

Project End

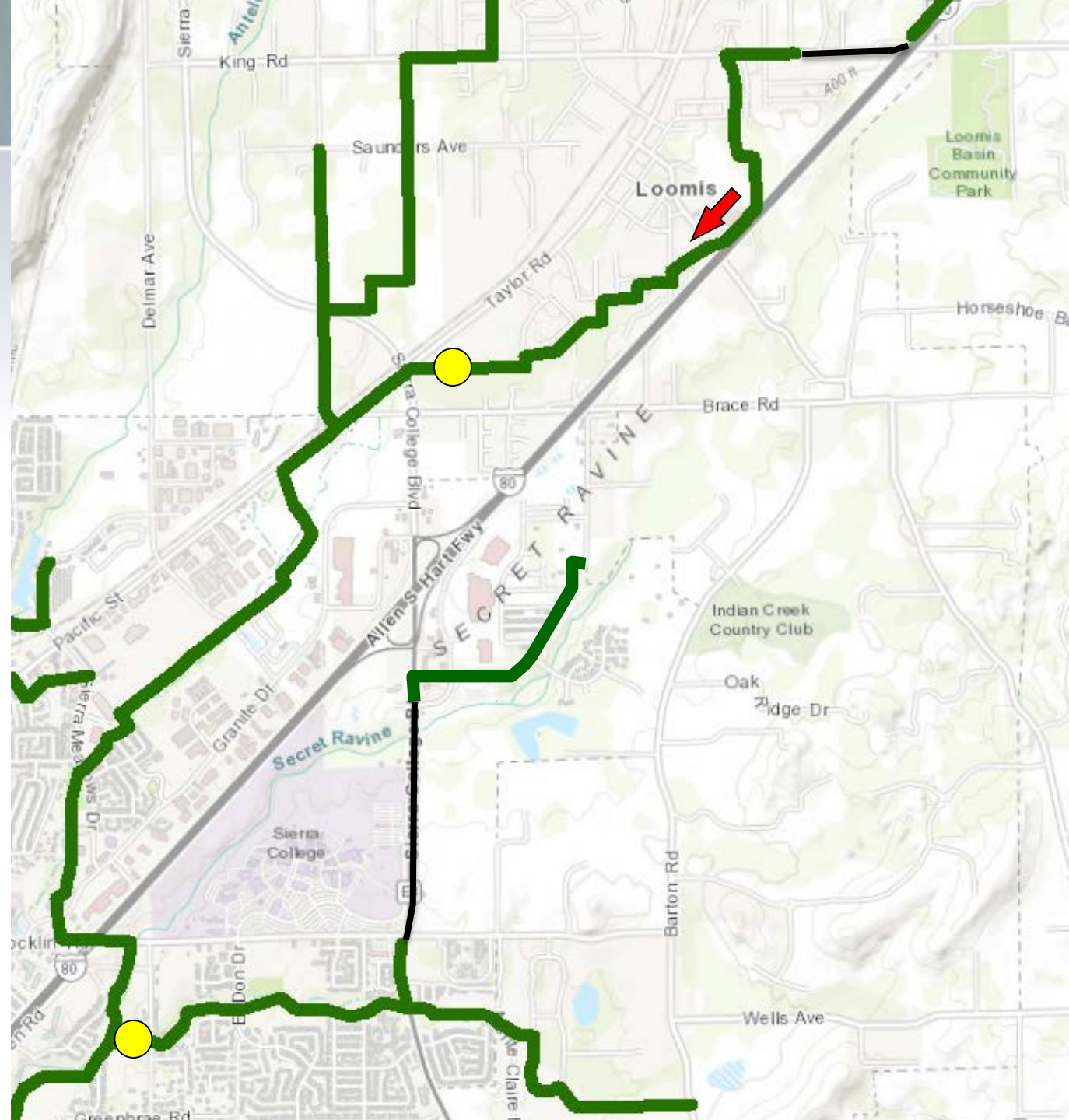
Project Start

Arrowhead Dr

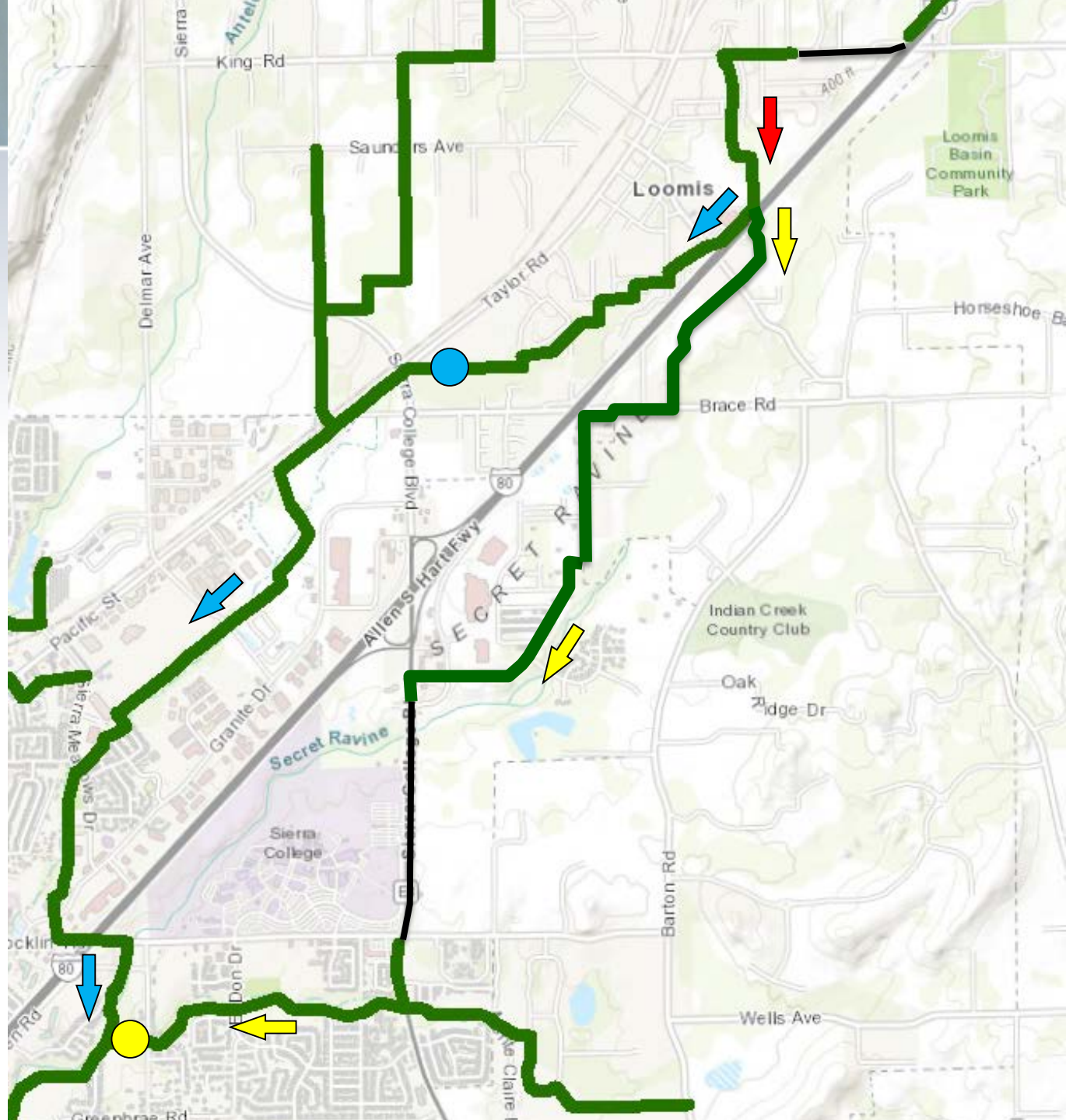
Foothill Trunk Replacement

➤ Before 2019

➤ Foothill Trunk
in SECAP



➤ Current



Preparedness for Bidding

- IS/MND – Filed NOD with County in Oct 2015
- Easements (Sewer and Temporary Construction)
- Water Quality Certification and General Construction Permit - Section 401 and 402 of Clean Water Act – Regional Water Quality Control Board
- Streambed Alteration Agreement - Section 1602 of Fish and Game Code – CA Department of Fish and Wildlife

Scheduling Challenges

- Nationwide Permit – Section 404 of the Clean Water Act - U.S. Army Corps of Engineers
 - Sensitive Cultural Resources
- Requirements to construct during summer months

Option 1 – Immediately Bid Project

➤ Drawbacks

- Do not have 404 permit
- Potential for change order
- Bidding late in the construction season

➤ Advantages

- Complete sooner
- Lessen concern of future capacity issues

Option 2 – Bid after All Permits Obtained

➤ Drawbacks

- Must manage capacity during wet weather

➤ Advantages

- Will have permits
- More competitive bid
 - Few bidders
 - Lack of contractors
- Flexibility
 - Self-imposed schedule



Questions?

Flow Depths During 16 JAN 2019 Storm Event in Lower Loomis Trunk (10-in) & Foothill Trunk (12-in)

