

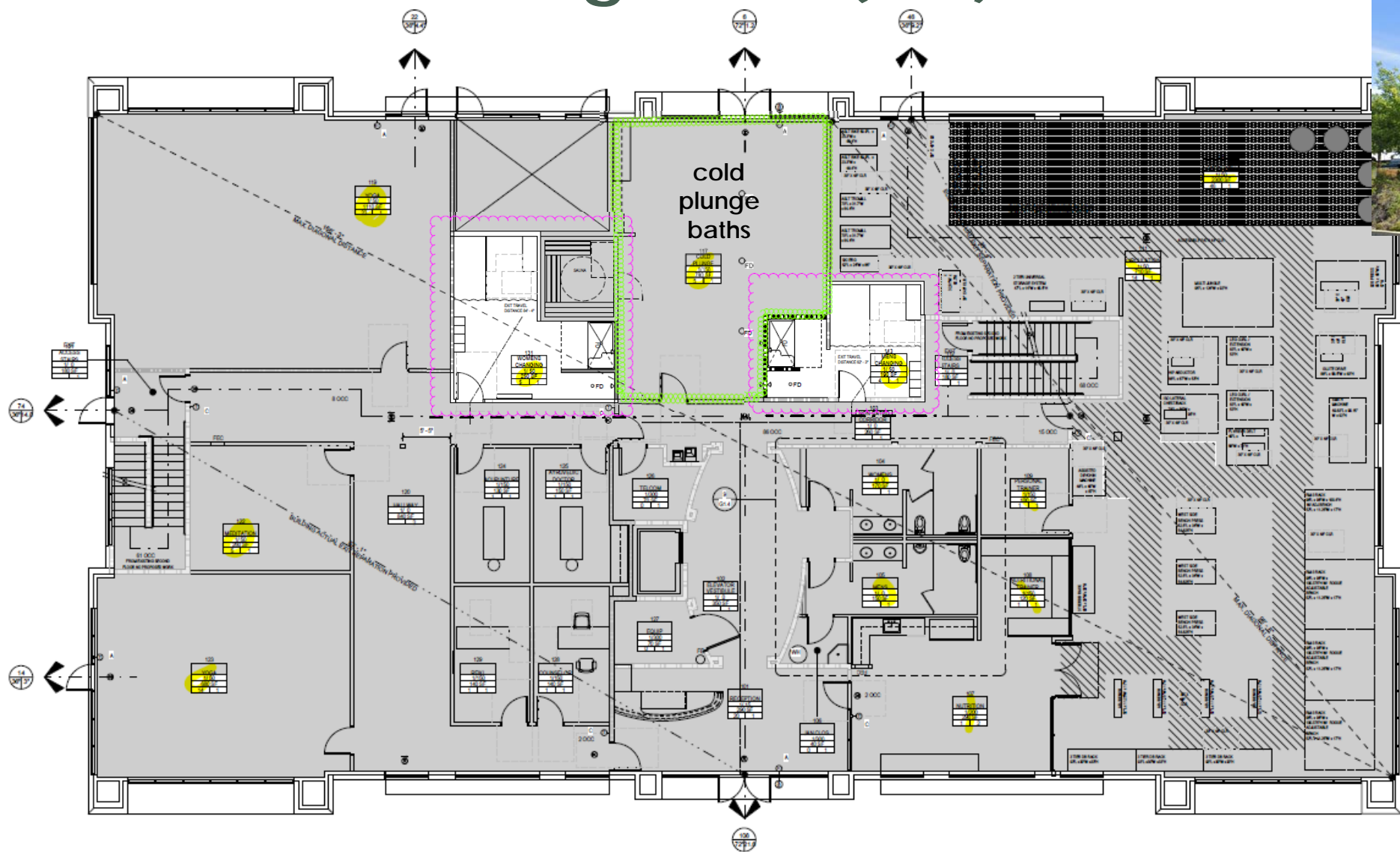
# The Rising Zone Appeal of Participation Charges

South Placer Municipal Utility District



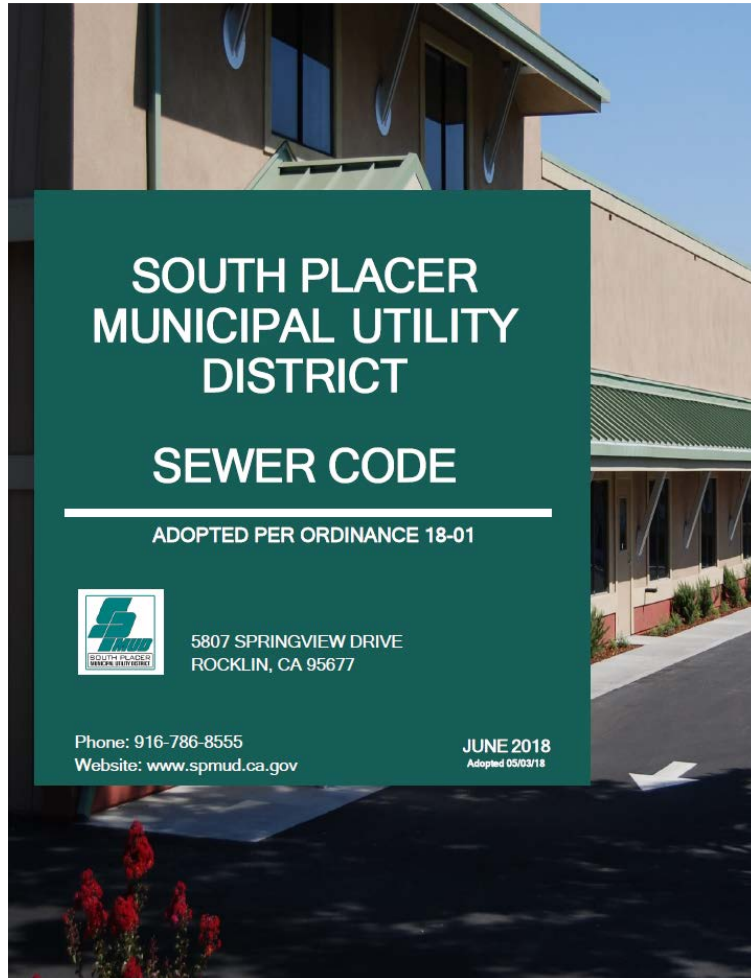
April 4, 2024

# The Rising Zone (TRZ)





# The Rising Zone (TRZ)



## Sewer Code, Chapter 2

<p>3. Medium Density User</p> <ul style="list-style-type: none"> <li>a) Church (w/ Kitchen and Meeting Hall)</li> <li>b) School (w/o Cafeterias and w/o Gymnasiums w/ Showers)</li> <li>c) Bowling/Entertainment Center (w/o Showers)</li> <li>d) Day Care Center (w/o Kitchen)</li> <li><u>e) Sports/Fitness Center (w/o Showers)</u></li> <li>f) Retail Store</li> <li>g) Bank/Offices (Other than Medical/Dental)</li> <li>h) Chiropractor's Office</li> <li>i) Theatres (Theaters that provide dining services shall be considered a FOG producing FSE)</li> <li>j) Auditorium/Halls/Lodges</li> </ul>	<p><math>\frac{1}{3}</math>EDU per 1,000 sq. ft.</p>
<p>4. High Density User.</p> <ul style="list-style-type: none"> <li>a) Barber/Beauty Shop/Nail Salon</li> <li>b) School (w/ Cafeterias or Gymnasiums w/ Showers)</li> <li>c) Bowling/Entertainment Center (w/ Kitchen)</li> <li>d) Day Care Center (w/ Kitchen)</li> <li><u>e) Sports/Fitness Center (w/ Showers)</u></li> <li>f) Medical/Dental Facility</li> <li>g) Service Station / Mechanic Shop</li> <li>h) Pet Grooming Center</li> <li>i) Veterinary Clinic</li> <li>j) Bars</li> <li>k) Coffee Shops/Kiosks(w/ limited food preparation)</li> <li>l) Ice Cream / Frozen Yogurt / Shaved Ice</li> </ul>	<p><math>\frac{2}{3}</math>EDU per 1,000 sq. ft</p>



# The Rising Zone (TRZ)

**First Floor**      **11,164 square feet**

Room Number	Room Name	Area (SF)	Occupancy Type	Sewer Code Use Designation	EDU
104	WOMENS	173.14	ANCILLARY	2/3	0.12
105	MENS	145.29	ANCILLARY	2/3	0.10
107	NUTRITION	290.44	KITCHENS (COMMERCIAL)	2/3	0.19
110	STRENGTH	2304.06	EXERCISE ROOMS	2/3	1.54
111	CIRCULATION	713.3	EXERCISE ROOMS	2/3	0.48
113	MENS CHANGING	188.35	LOCKER ROOMS	2/3	0.13
117	COLD PLUNGE	789.84	BUSINESS AREAS	2/3	0.53
119	YOGA	1109.34	EXERCISE ROOMS	2/3	0.74
122	MEDITATION	261.07	EXERCISE ROOMS	2/3	0.17
123	YOGA	679.34	EXERCISE ROOMS	2/3	0.45
131	WOMENS CHANGING	247.49	LOCKER ROOMS	2/3	0.16
<b>Subtotal</b>		<b>6,902 SF</b>			<b>4.60 EDU</b>



# The Rising Zone (TRZ)

First floor (11,164 sq. ft):

Sports/Fitness Center (w/ Showers) (6,902 sq. ft)  
High Density User – Sports/Fitness Center (w/ Showers)  
(2/3 EDU per 1,000 sq. ft. per the District’s Sewer Code)  
6,902 sq. ft. @ 2/3 EDU / 1,000 sq. ft. = 4.60 EDU

Office/Chiropractic Office (4,262 sq. ft)  
Medium Density User – Chiropractic Office and Office other than Medical/Dental  
(1/3 EDU per 1,000 sq. ft. per the District’s Sewer Code)  
4,262 sq. ft. @ 1/3 EDU / 1,000 sq. ft. = 1.42 EDU

Second floor (11,164 sq. ft):

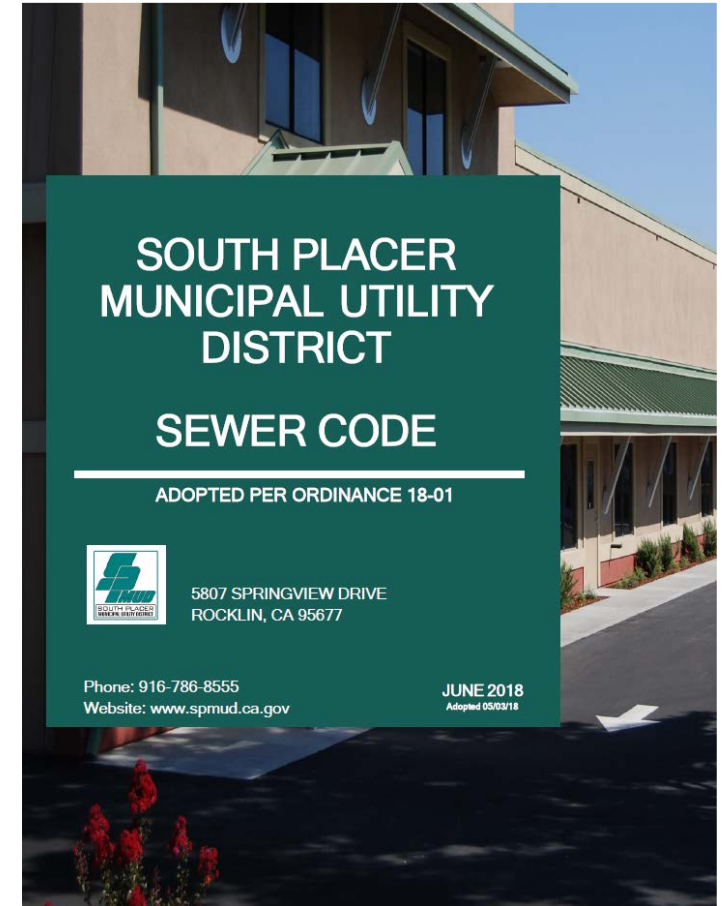
Office (11,164 sq. ft)  
Medium Density User – Office other than Medical/Dental  
(1/3 EDU per 1,000 sq. ft. per the District’s Sewer Code)  
11,164 sq. ft. @ 1/3 EDU / 1,000 sq. ft. = 3.72 EDU

Total EDU Assessment	9.74 EDU
(Less credits, previously paid)	7.44 EDU)
	Balance = 2.30 EDU

Total = 2.30 EDU × \$14,767\* = \$33,964.10

**Total Due = \$33,964.10**

\*(rate currently in effect)



# Recommendation

1. Find that the calculation of the composite charges for TRZ are correct per the District's Sewer Code;
2. Deny the appeal; and
3. Require payment of total participation charges due in the amount of \$33,964.10.

Questions?