

# Standard Specifications and Improvement Standards For Sanitary Sewers 2021 Update

## Overview

- Provide the minimum standards for the design, installation and testing of the District's sewer facilities.
- Last updated in 2009.
- Maintain relevancy with state requirements and evolution of the engineering and construction industries.

## Summary of Changes

### Section 1: General Requirements & Procedures:

- Updated to reflect the change to electronic plan checking.

### Section 2: Materials:

- Updated acceptable pipe materials, fittings, etc.

### Section 3: Design:

- Updated to include the maximum depth of sewer lines, perpendicular utility crossings, minimum separation of utilities, manhole lining requirements, all-weather surface over pipe, and specifications for grease control devices.

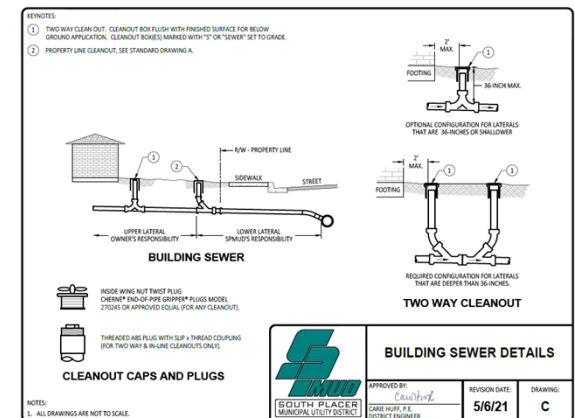
### Section 4: Wastewater Pump Station:

- Updated to reflect safety requirements.

*Note: A more holistic review of the Wastewater Pump Station Section is anticipated next year with input from a consultant with lift station expertise.*

### Section 5: Installation:

- Minor updates to pipe materials and CCTV target requirements.



# Standard Specifications and Improvement Standards For Sanitary Sewers 2021

## Summary of Changes (continued)

### Section 6: Easements & Rights of Way:

- Updated to include the District's standard easement language and increased minimum width.

### Section 7: Building Sewers:

- Updated pipe materials and fittings, clarification on utility separation and new details for accessory dwelling units.

### Section 8: Standard Detail Drawings:

- All details were updated in AutoCAD and will be available for download on the District's website.

## Request for Stakeholder Review

- Draft Standards posted on the District website.
- Notification sent to the City of Rocklin, Town of Loomis, Placer County, local engineering firms and contractors.
- Received comments from one engineering firm (Ubora Engineering and Planning):
  1. Perpendicular utility crossings
  2. Manholes at reverse curves
  3. All-weather access
  4. Grease control devices

## Moving Forward

- Annual review internally for minor modifications.
- Standards brought to the Board for major changes and at least once every five years.

