



## Professional Services Agreements with WaterWorks Engineers

- ❖ Wastewater Pump Station Design Standards Update
- ❖ Preliminary Design and Environmental for the Johnson Springview Park Creek Crossing
- ❖ Preliminary Engineering for the Sierra College Trunk Line and Lift Station Abandonment
- ❖ Preliminary Engineering for the Cameo Court Trunk Line and Lift Station Abandonment

September 7, 2023



# Wastewater Pump Station Design Standards Update

## SOUTH PLACER MUNICIPAL UTILITY DISTRICT

### STANDARD SPECIFICATIONS AND IMPROVEMENT STANDARDS FOR SANITARY SEWERS

5807 Springview Drive  
Rocklin, CA 95677  
Phone: 916-786-8555  
Website: [www.spmud.ca.gov](http://www.spmud.ca.gov)

MAY 2021



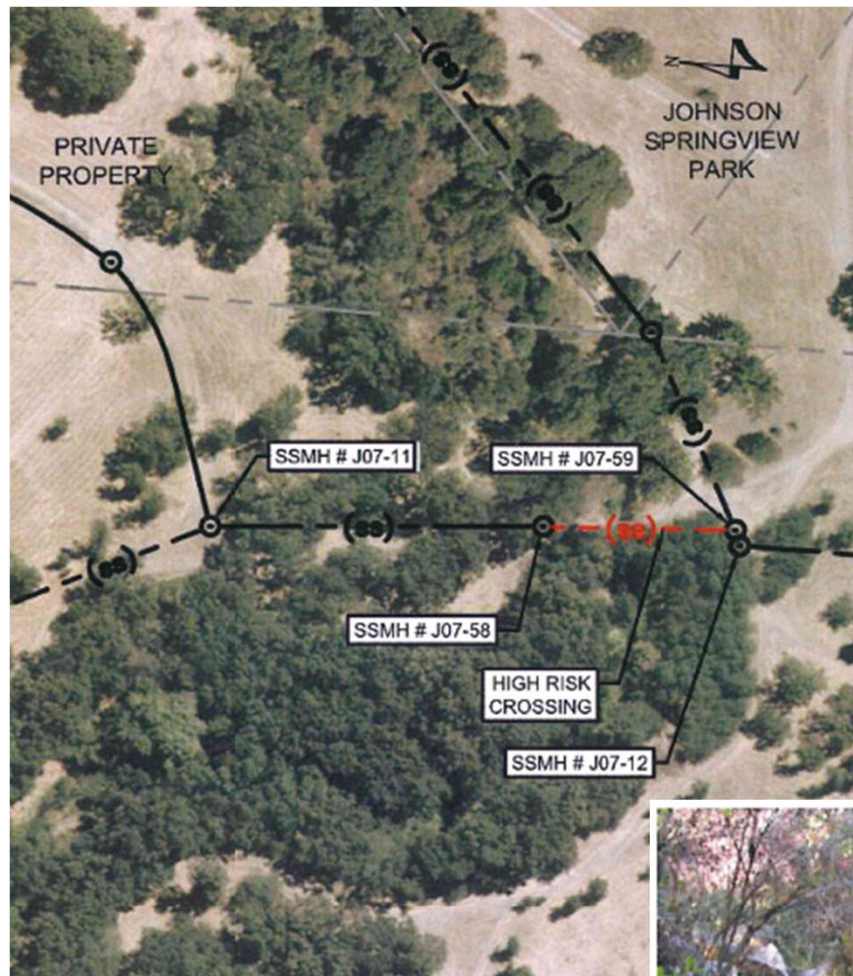
## Project information:

- ❖ Standard Specifications and Improvement Standards for Sanitary Sewers – Chapter 4
- ❖ Chapter 4 last updated in 2009
- ❖ \$29,300
- ❖ Fund 100
- ❖ Updates complete in early 2024

# Preliminary Design / Environmental for Johnson Springview Park Creek Crossing

## Project information:

- ❖ 130 feet of 18-inch pipe inside a 30-inch casing with manholes on both sides and abutments for City of Rocklin funded pedestrian bridge
- ❖ \$24,922 with up to \$55,000 for environmental and cultural resources
- ❖ Estimated construction cost: \$400,000
- ❖ Fund 400
- ❖ Preliminary analysis complete in December of 2023



J07-058: Looking upstream at crossing

# Preliminary Engineering for Sierra College Trunk Line & Lift Station Abandonment

## Project information:

- ❖ SECAP major facility
- ❖ First phase: analyze alignments to finalize feasible alternative to allow staff to condition development projects on the west side of Sierra College Boulevard
- ❖ \$74,882
- ❖ Estimated construction cost: \$5,900,000 (future)
- ❖ Fund 300
- ❖ Preliminary engineering complete in February of 2024



# Preliminary Engineering for Cameo Court Trunk Line & Lift Station Abandonment

## Project information:

- ❖ SECAP major facility
- ❖ First phase: analyze alignments and extent of offsite improvements / begin coordination with the City of Roseville
- ❖ \$72,074
- ❖ Estimated construction cost: \$1,500,000
- ❖ Fund 300 / Fund 400
- ❖ Preliminary engineering complete in February of 2024

