



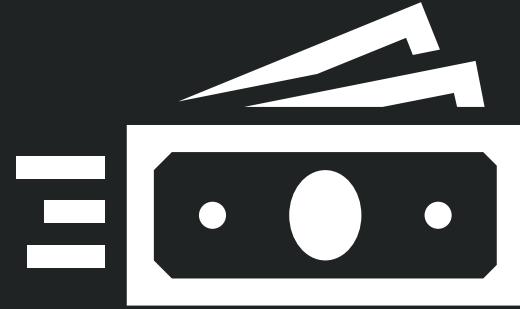
**OPERATING
FUND 100**



**RENEWAL
FUND 400**



**EXPANSION
FUND 300**



**OPERATING
FUND 100**



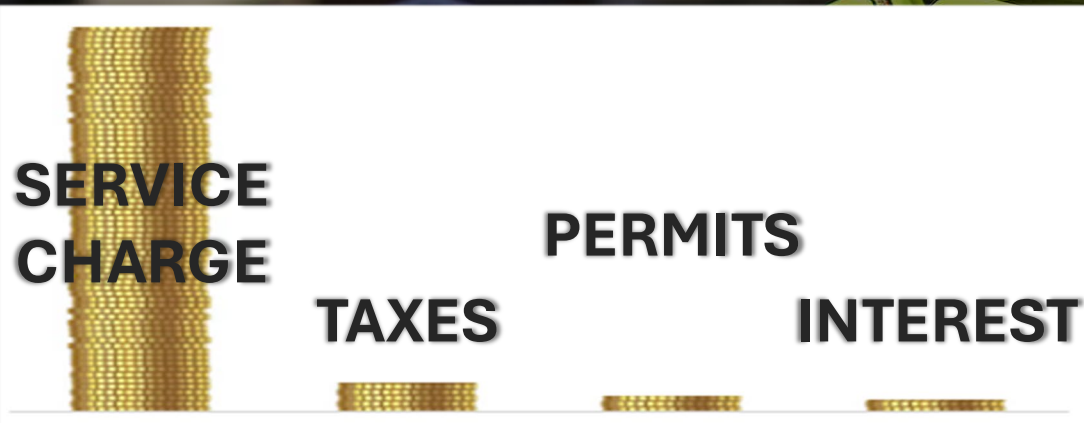
OPERATING





OPERATING

REVENUE



\$17.1 M

\$1.2 M

\$0.7 M

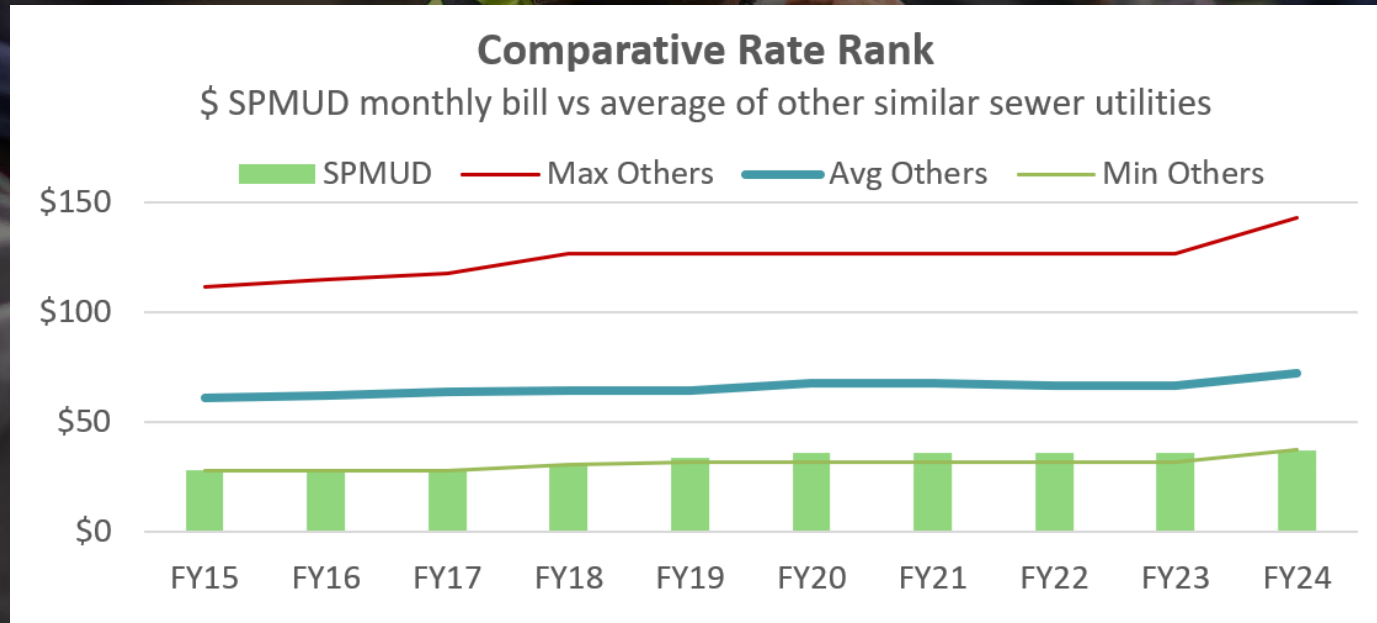
\$0.5 M

- 2023 RATE STUDY
- SCHEDULED INCREASES THROUGH 2027
- \$ 38.94 / MONTH
- LOWEST IN REGION



OPERATING

REVENUE



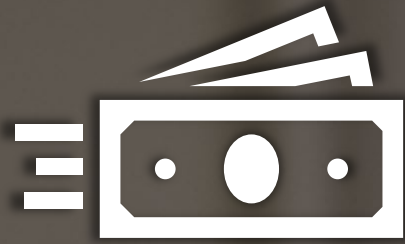


OPERATING

EXPENSES 

- TREATMENT COST
- DEPRECIATION TRANSFER
- FLUCUATIONS
 - WWTP ESTIMATES/TRUE-UPS
 - NEWCASTLE PROJECTS





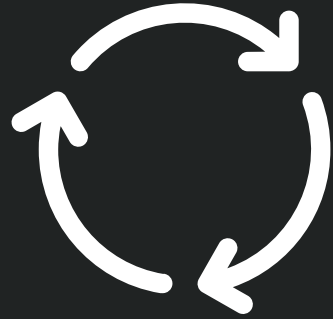
OPERATING

RESTRICTED (CEPPT)

STARTING BALANCE (7/1/24)	\$ 3.4 M
PROPOSED REVENUE	\$ 0.1 M
PROPOSED EXPENDITURES	\$ 0.9 M
ENDING BALANCE	\$ 2.6 M

UNRESTRICTED

STARTING BALANCE (7/1/24)	\$ 14.1 M
PROPOSED REVENUE	\$ 19.9 M
PROPOSED EXPENDITURES	(\$ 22.4 M)
ENDING BALANCE	\$ 11.6 M
MINIMUM RESERVE (3 MONTH)	(\$ 4.6 M)
SURPLUS BALANCE	\$ 7.1 M



**RENEWAL
FUND 400**



RENEWAL



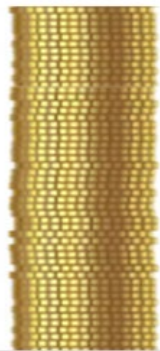


RENEWAL

REVENUE



**DEPRECIATION
TRANSFER**



\$2.6 M

INTEREST



\$1.0 M

- **TRANSFER**
 - FROM FUND 100
 - INTO FUND 400
 - PERCENT OF CALCULATED ANNUAL DEPRECIATION



RENEWAL

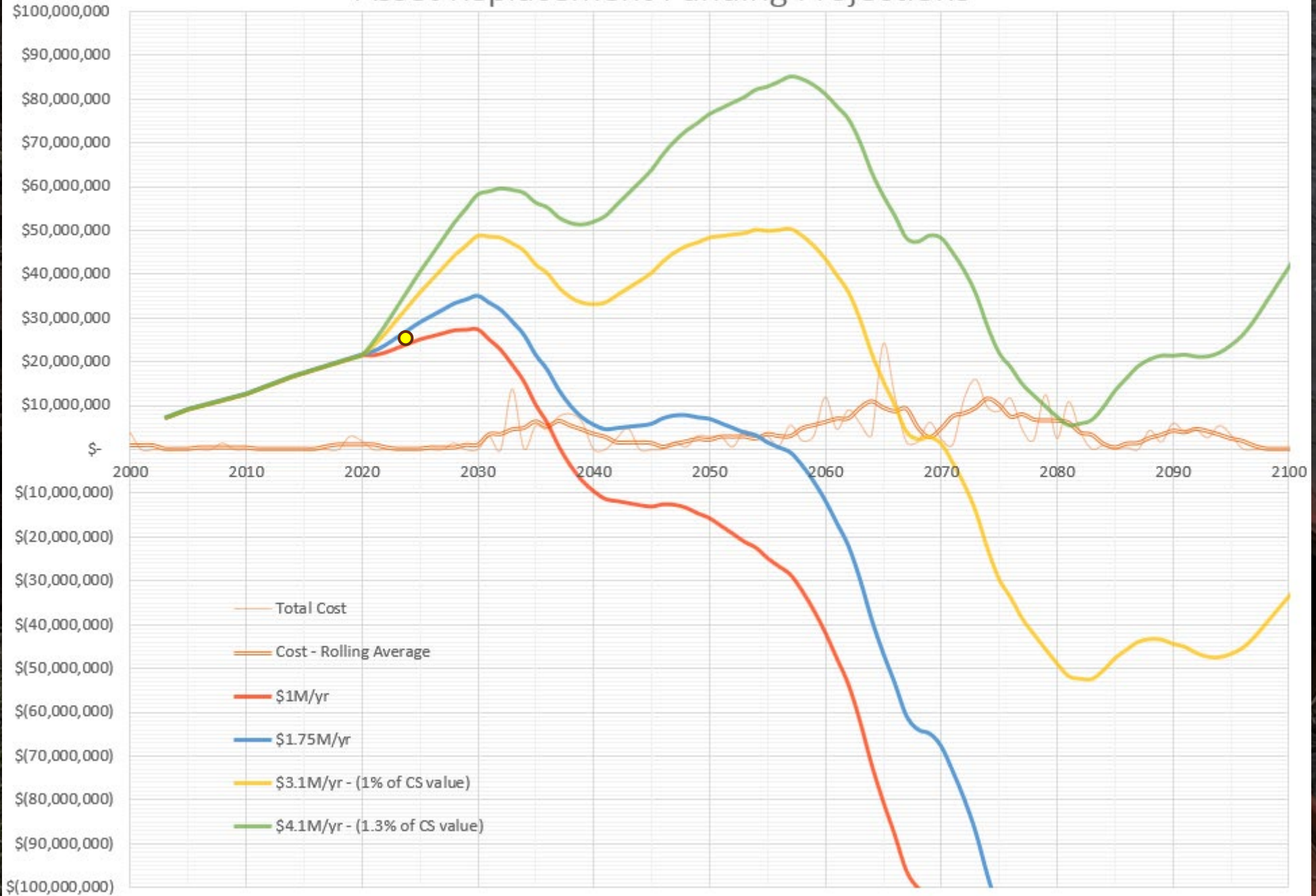
EXPENSES

- **RENEWAL PROJECTS**
- **REHAB, REPAIR, REPLACE**
- **AT END OF SERVICE LIFE**
- **~\$ 320 M IN ASSETS**



“NESSIE CURVE”

Asset Replacement Funding Projections





RENEWAL

STARTING BALANCE	\$ 25.9 M	(7/1/2024)
PROPOSED REVENUE	\$ 4.5 M	
PROPOSED EXPENDITURES	(\$ 8.7 M)	
ENDING BALANCE	\$ 21.7 M	
MINIMUM RESERVE (EMERGENCY)	(\$ 1.0 M)	
SURPLUS BALANCE	\$ 20.7 M	



EXPANSION
FUND 300



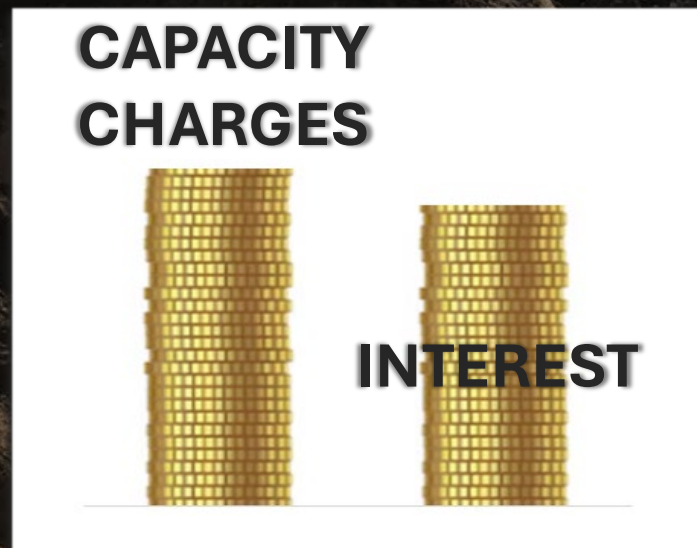
EXPANSION





EXPANSION

REVENUE



\$1.4 M

\$1.3 M

- CAPACITY CHARGE**

TOTAL COST OF EXPANSION PROJECTS \$ 76.0 M

- EXISTING EXPANSION FUND BALANCE (\$ 26.4 M)

CASH NEEDED TO FUND EXPANSION \$ 49.6 M

PLANNED EDUs TO CONNECT 12,320

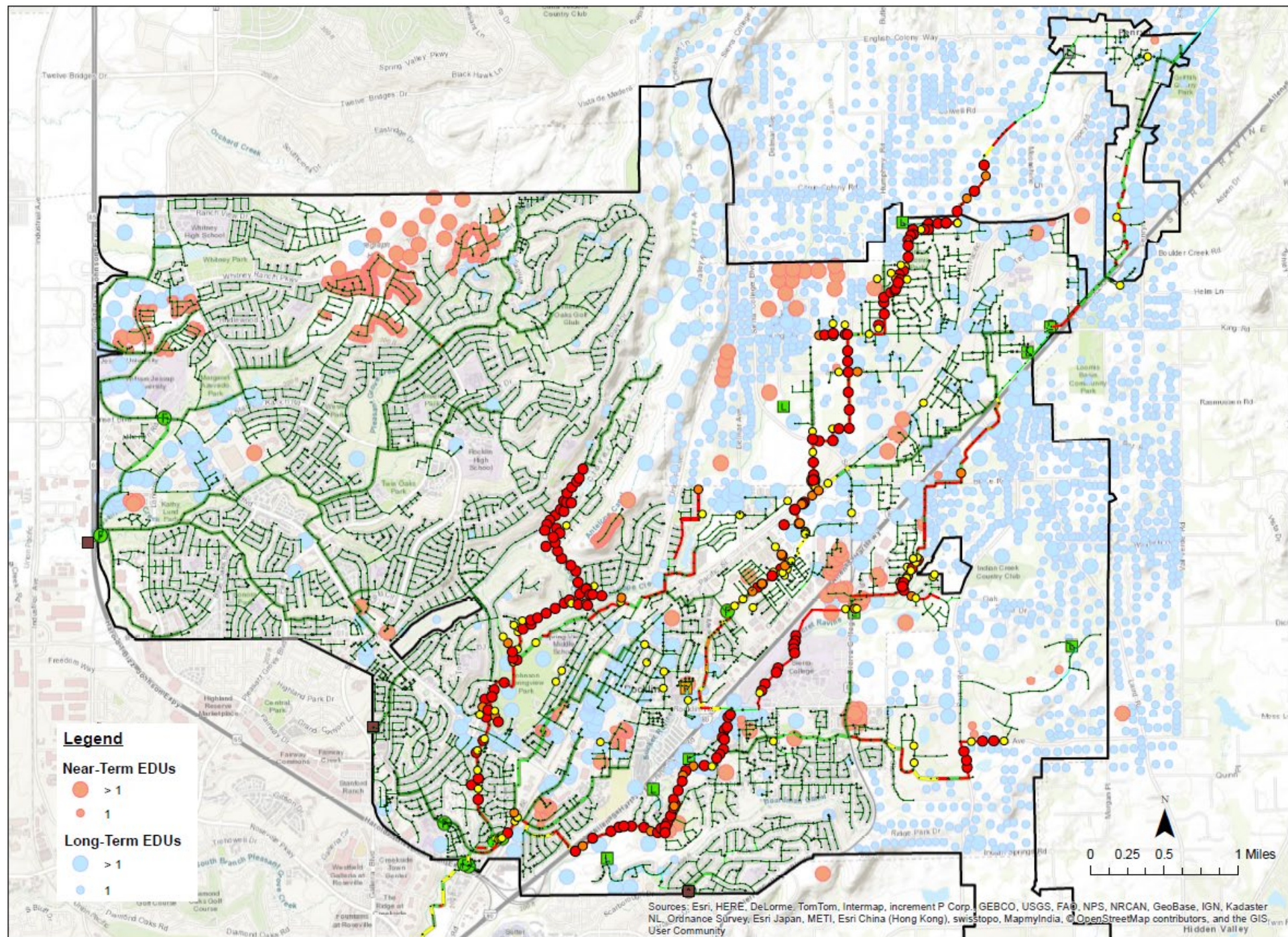
CAPACITY CHARGE \$ 4,027/EDU

(2020 SECAP AND NEXUS STUDY)



South Placer Municipal Utility District
2020 System Evaluation and Capacity Assurance Plan

Long-Term PWWF



Legend

Near-Term EDUs

- > 1
- 1

Long-Term EDUs

- > 1
- 1

Legend

Manhole Freeboard (ft)

- Less than 0
- 0~1
- 1~3
- 3~6
- Greater than 6

Gravity Main Maximum d/D

- Less than 0.5
- 0.5~0.7
- 0.7~0.8
- 0.8~0.99
- Greater than 0.99

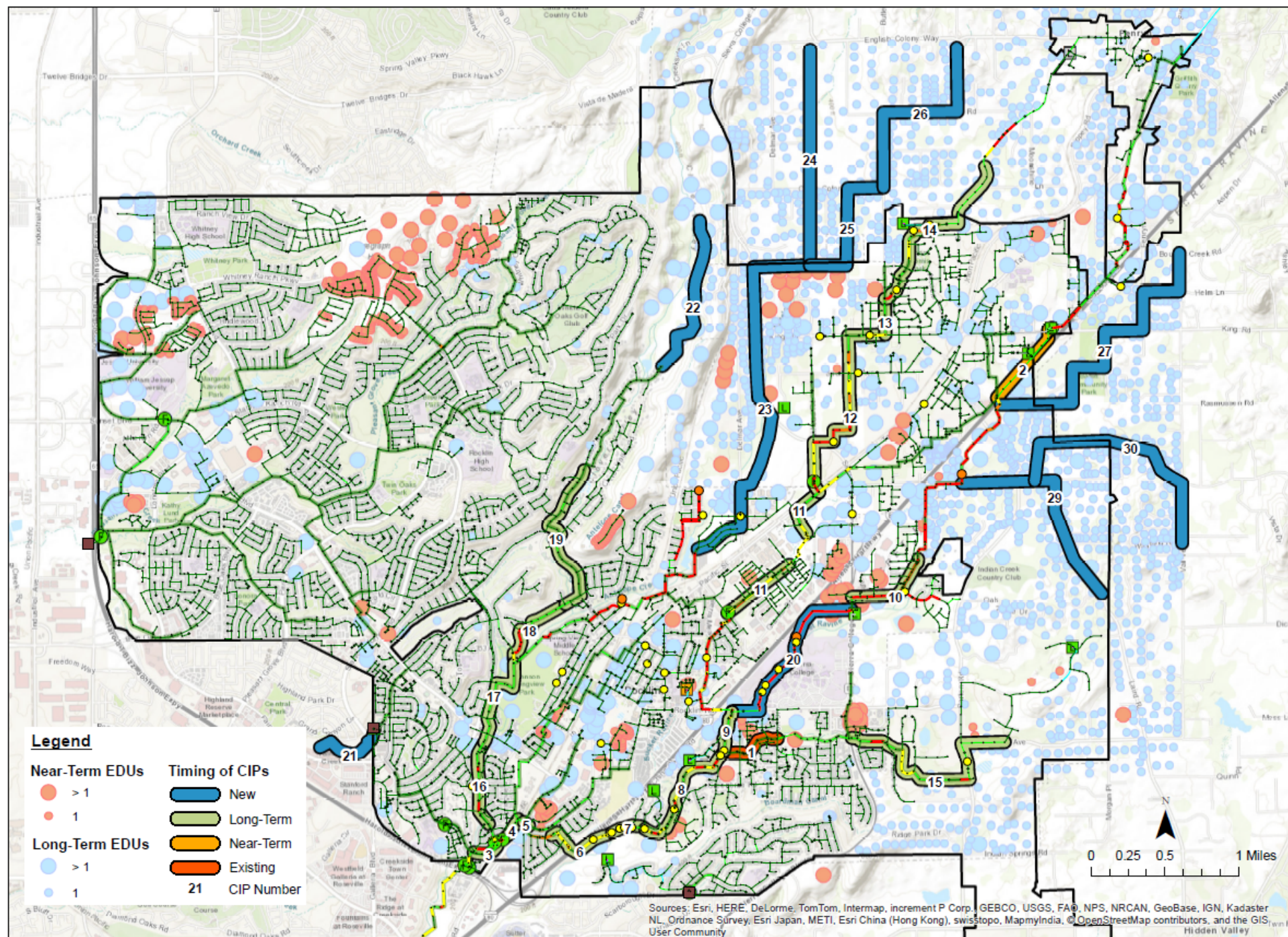
Sources: Esri, HERE, DeLorme, TomTom, Intermap, increment P Corp., GEBCO, USGS, FAO, NPS, NRCAN, GeoBase, IGN, Kadaster NL, Ordnance Survey, Esri Japan, METI, Esri China (Hong Kong), swisstopo, MapmyIndia, © OpenStreetMap contributors, and the GIS User Community



South Placer Municipal Utility District
2020 System Evaluation and Capacity Assurance Plan

Long-Term PWWF

with Proposed Improvements



Legend

Near-Term EDUs	Timing of CIPs
● > 1	■ New
● 1	■ Long-Term
Long-Term EDUs	■ Near-Term
● > 1	■ Existing
● 1	■ 21 CIP Number

Legend

Manhole Freeboard (ft)

- Less than 0
- 0~1
- 1~3
- 3~6
- Greater than 6

Gravity Main Maximum d/d

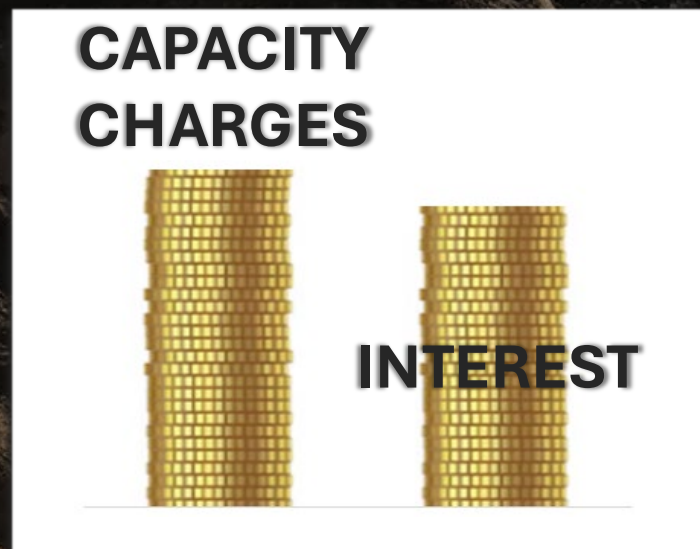
- Less than 0.5
- 0.5~0.7
- 0.7~0.8
- 0.8~0.99
- Greater than 0.99

Sources: Esri, HERE, DeLorme, TomTom, Intermap, increment P Corp., GEBCO, USGS, FAO, NPS, NRCAN, GeoBase, IGN, Kadaster NL, Ordnance Survey, Esri Japan, METI, Esri China (Hong Kong), swisstopo, MapmyIndia, © OpenStreetMap contributors, and the GIS User Community



EXPANSION

REVENUE



\$1.4 M

\$1.3 M

- **CAPACITY CHARGE**

- **\$ 14,728 / EDU (7/1/2024)**
- **\$ 4,926 (LOCAL)**
- **\$ 9,802 (REGIONAL)**

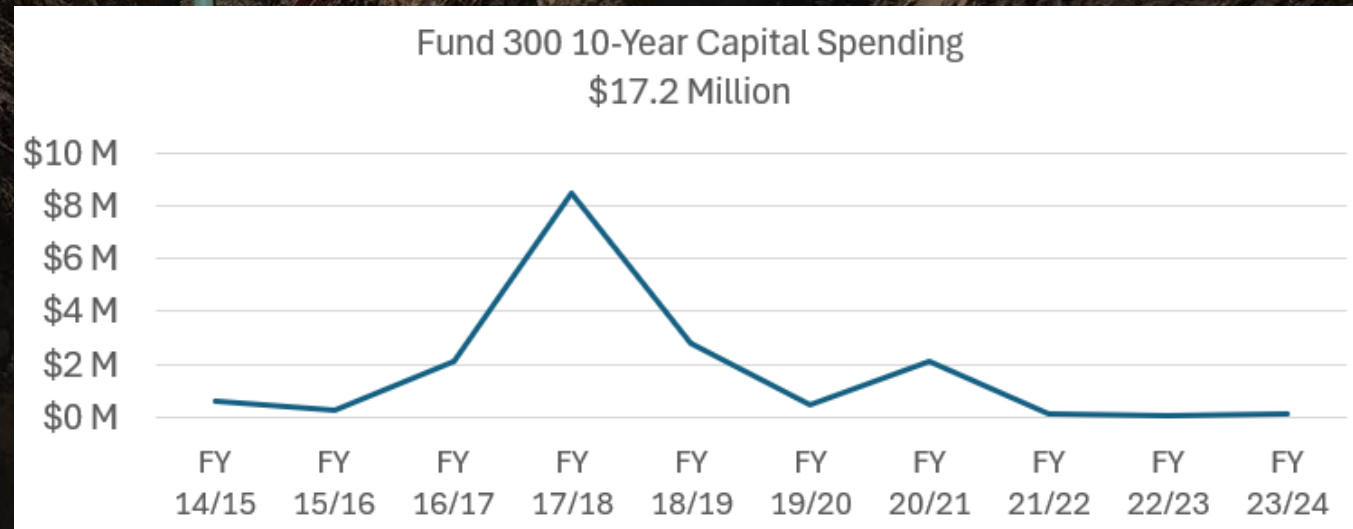


EXPANSION

EXPENSES



- **10-YR SPENDING**
- **\$ 17.2 M**
- **FUND BALANCE**
- **\$ 34.5 M (7/1/2024)**





EXPANSION

2020 SECAP
2024

